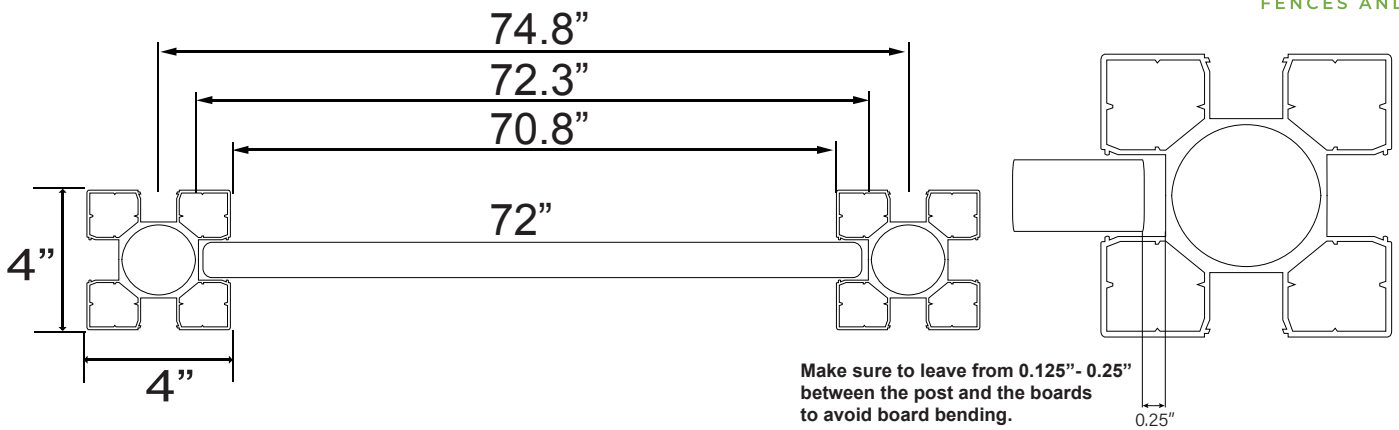
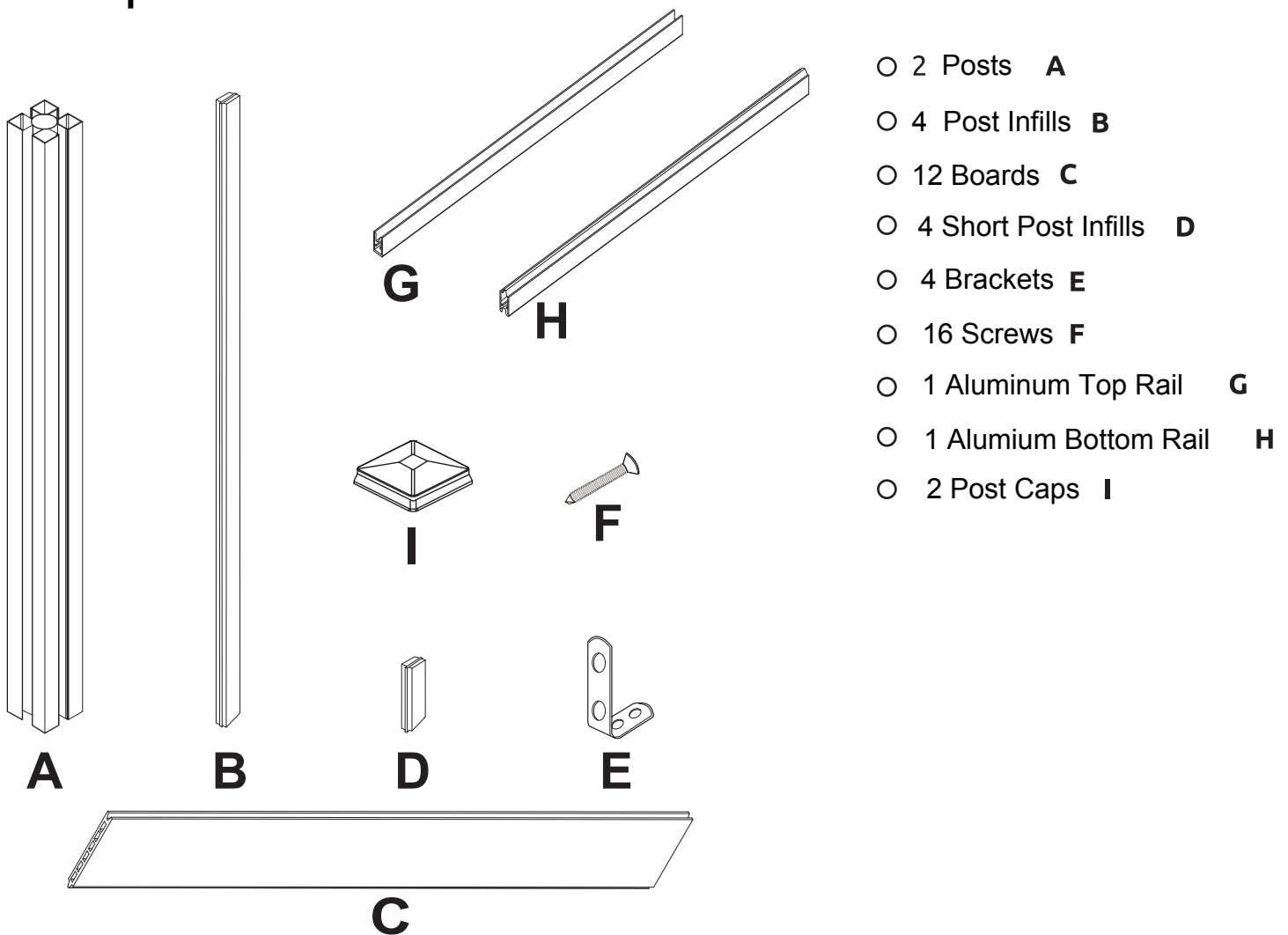


Composite Fence In Ground Installation Guide

Composite Fence with 2 posts



Components



Important Note:

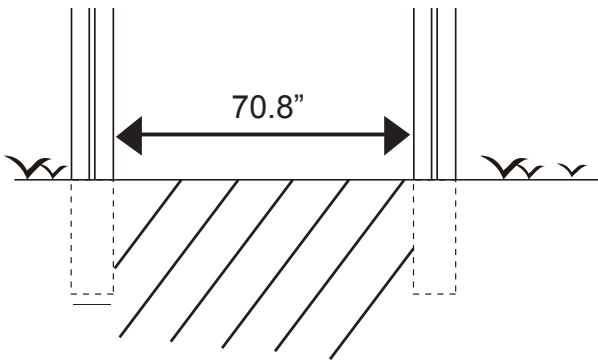
Materials should be covered and kept dry until ready to install to ensure a clean surface. Products should not be stored outside and or covered with plastic sheeting.

All composite products should be stored at 19" intervals on a flat clean surface.

Support battens used in storage should align through the stack to equally transfer the load.

Post Installation - In Ground

Step 1



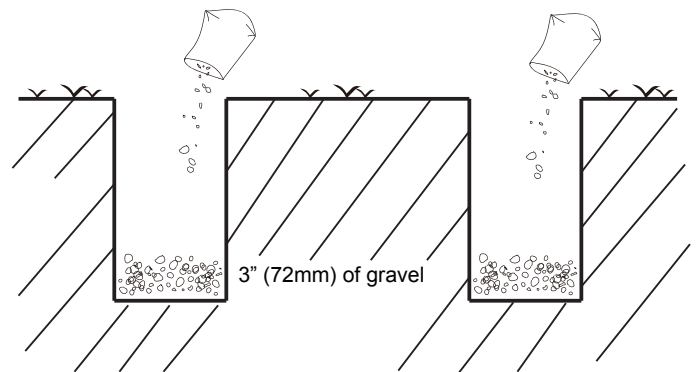
Before digging any post holes, make sure you are abiding local code requirements for exact post hole width and depth guidelines. The diameter of the hole should be a minimum of 12 Inches and the depth should be a minimum of 20 Inches.

Dig the post hole using an Augur Drill or other Post Hole digger.

While digging the post holes, be sure to keep your Post Hole digging tool straight and vertical.

Step 2

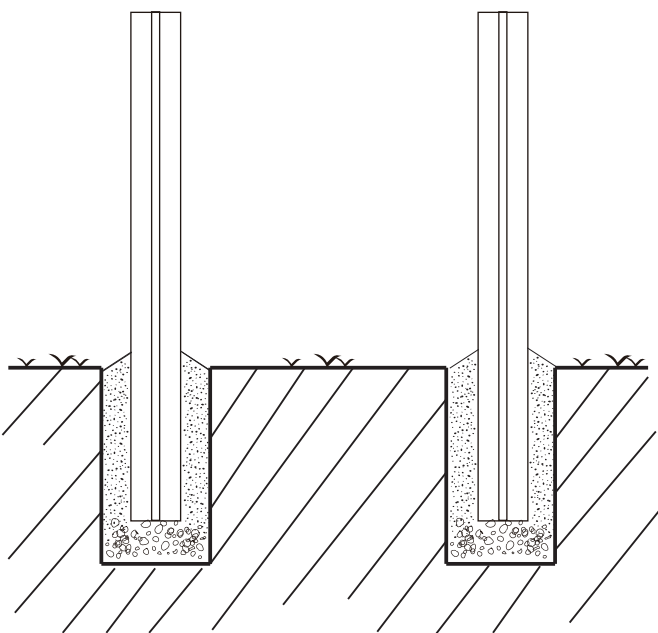
Pour 3" (72mm) of gravel into the post holes to allow drainage. Compact the gravel into the hole and ensure a level surface.



Confirm that the depth of your post hole are consistent and comply with local building code. Adjust depth if needed...

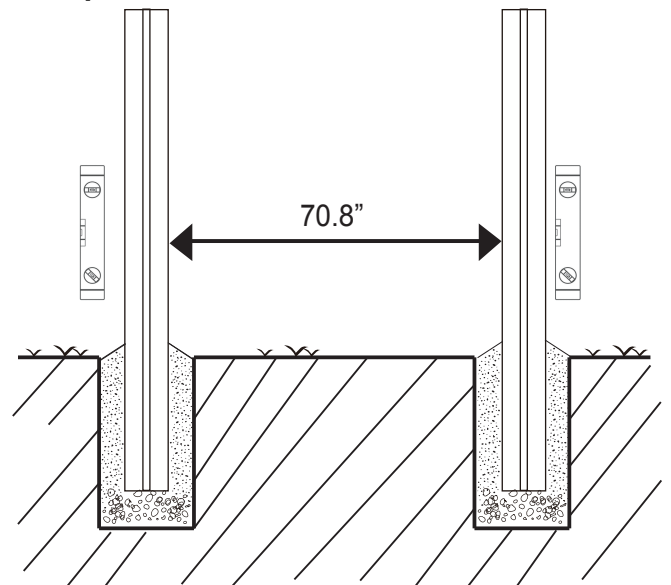
Reminder: Call 811 before digging post holes to avoid damaging underground utilities.

Step 3



Once the post is positioned in the hole, pour concrete into the hole. Dome the concrete around the post to prevent water pooling over time.

Step 4

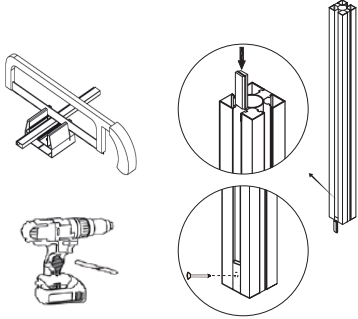


Use a spirit level and make sure the posts are completely vertical and straight again before the concrete completely hardens.

Tip: Wait until the concrete has completely cured before installing the rails or horizontal fence boards.

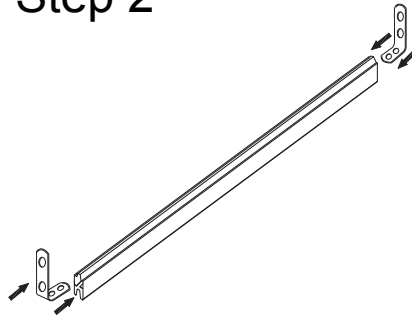
Fence Boards Installation

Step 1



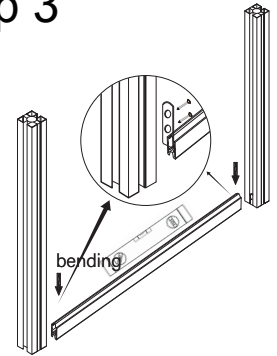
Cut the short post infill (D) into 1.2"-2", insert it into the bottom of post and fix it with the screw (F).

Step 2



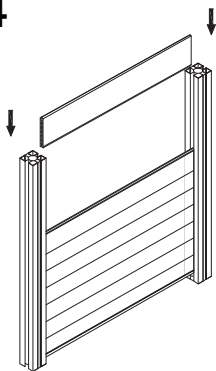
Insert the locking brackets (E) into the bottom cover (H). Attention: The raised side must face upwards.

Step 3



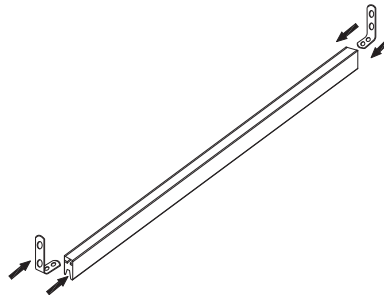
Put the bottom cover (H) over the short post infill. Attach the bottom cover between the posts (A) with one or two screws (F) per side. Use the spirit level to check that it is installed in a straight position.

Step 4



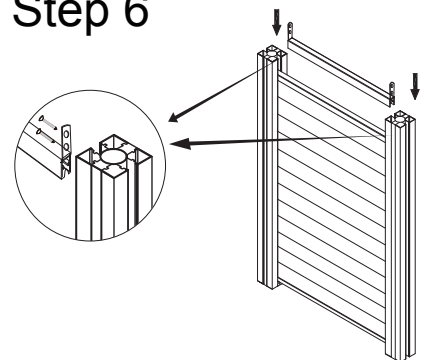
Put the fence panels (C) over the aluminum bottom cover (H), total 12pcs fence panels. In extreme weather conditions, it's highly recommended to use put aluminium rail inbetween 6th and 7th boards

Step 5



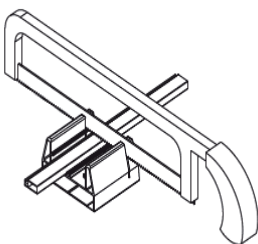
Insert the locking brackets (E) into the top cover (G) and fix it with screws (F). Attention: The concave side must face downwards.

Step 6

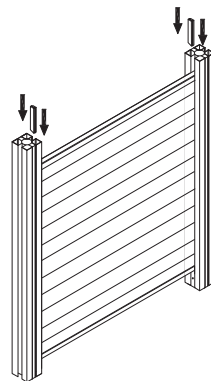


Attach the top cover (G) between the posts A with two screws (F) per side.

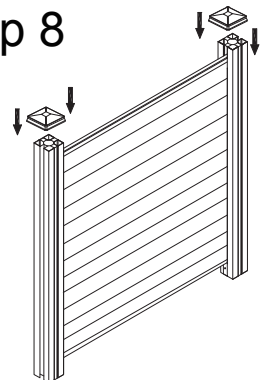
Step 7



Cut the short post infill (D) to the appropriate size for the two inside sides of the posts (A). Fill the sides with the cut post infills (D).



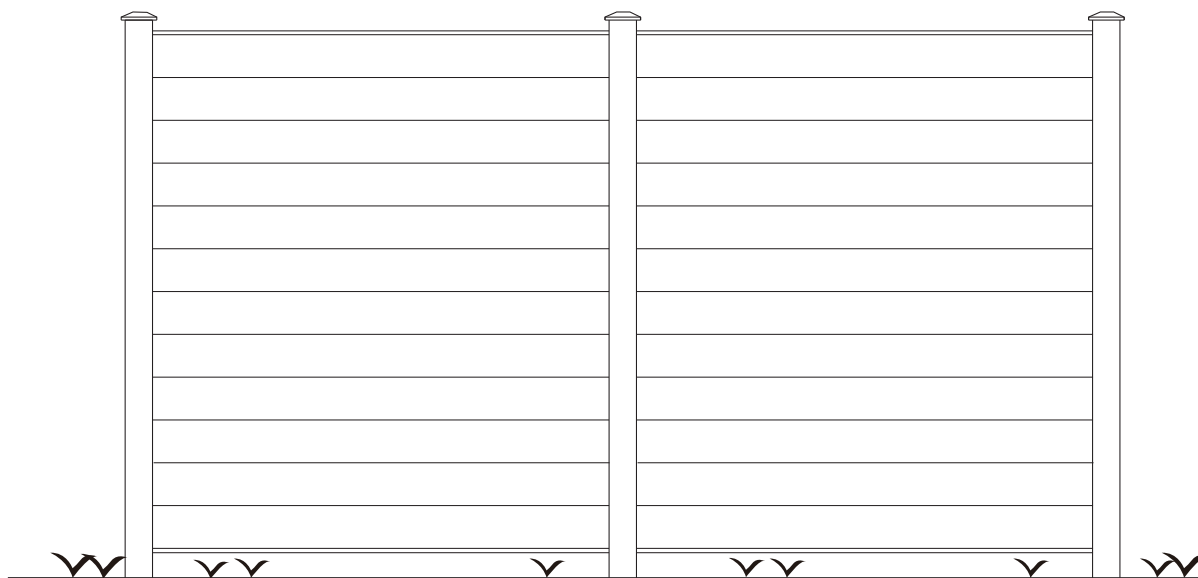
Step 8



Finally, place the post caps (I) on the top of posts (A) - done!

Step 1 - Step 8

To continue assembling one or more add-on elements, follow steps 1 - 8 of the basic element - done!



MAINTENANCE – FENCE BOARD

Little maintenance is required for The Eco Fence composite fence boards, besides cleaning 1-2 times a year with water and soap.

- For a standard washing, use soft detergent and water.
- If mold / mildew appears on the boards, clean with a product containing chlorine bleach.
- For oil and grease stain, wash immediately with a degreasing agent.
- Do not use solvent-based material. Do not stain, oil or paint the fence boards.

MAINTENANCE – ALUMINUM PARTS

- These parts do not require any specific maintenance.
- Do not use any acid-based product or solvents which can affect the posts paint surface.
- All metal parts are aluminum alloy and do not rust. You can maintain them with gentle cleansing products safe for aluminum.

If you have any additional questions please contact us at support@theecofence.com